

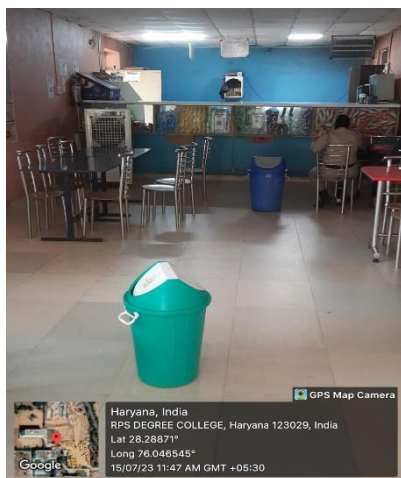
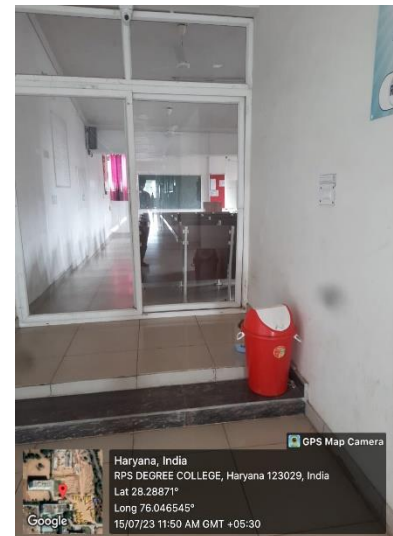
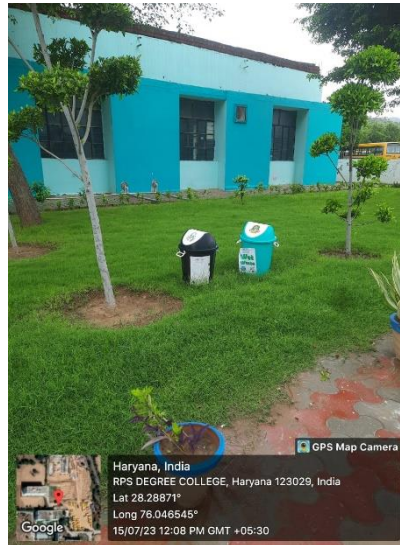
### 7.1.3 - Describe the facilities in the Institution for the management of the following types of degradable and non-degradable waste

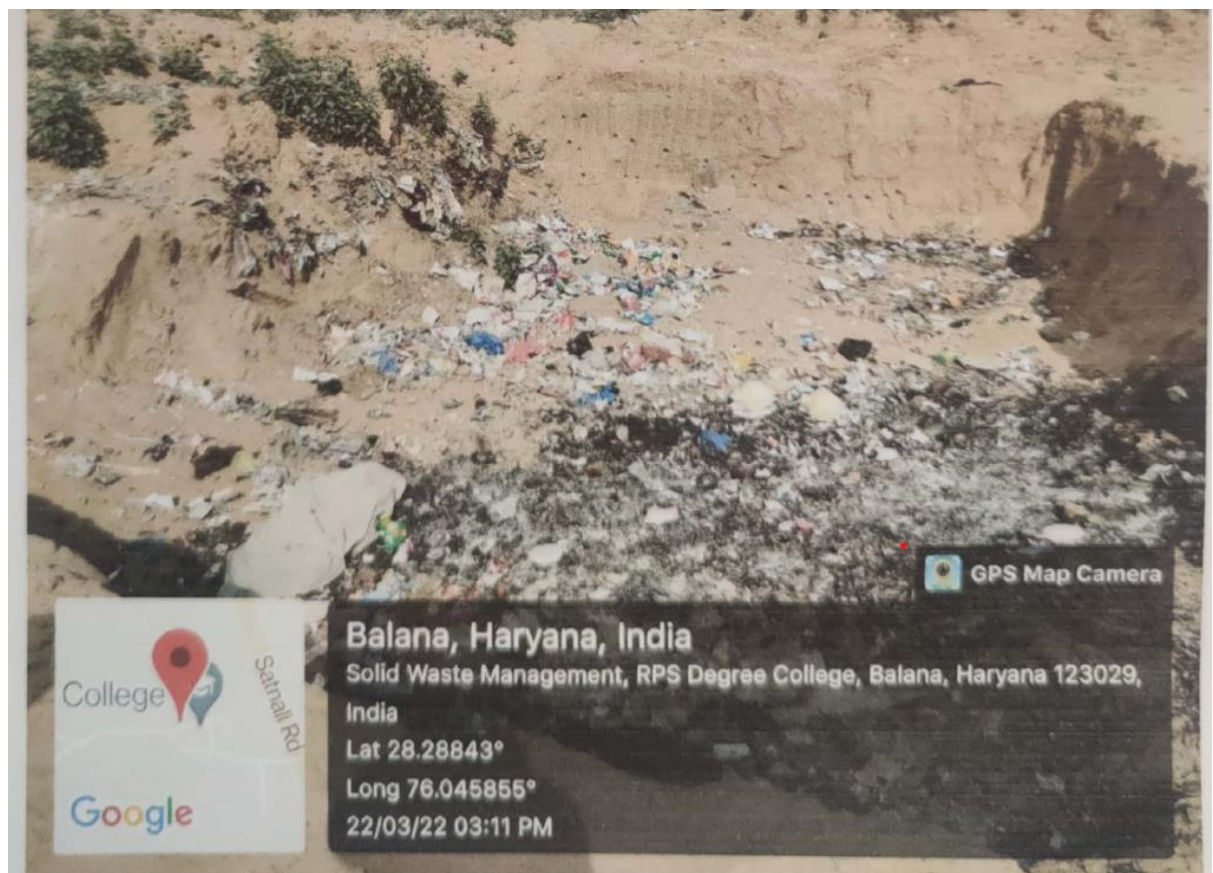
The college authority has taken all measures to maintain an environment friendly campus and proper disposal of all kind of wastes in suitable manner. The institution has green lush campus and is kept clean and tidy. The Institution implements effective waste management by practicing the three R's of waste management: **Reduce, reuse, and recycle!** In addition to this the Institution has organized many workshops and activities with NSS team in college campus and nearby villages. Training programmes are conducted from time to time about the methodology of disposing the waste. It was stressed that we should avoid plastic items to the best possible capacity.

#### SOLID WASTE MANAGEMENT

The Canteen waste, hostel mess waste, paper and plastic are the types of solid waste produced in the campus. The following are the ways to manage the waste:

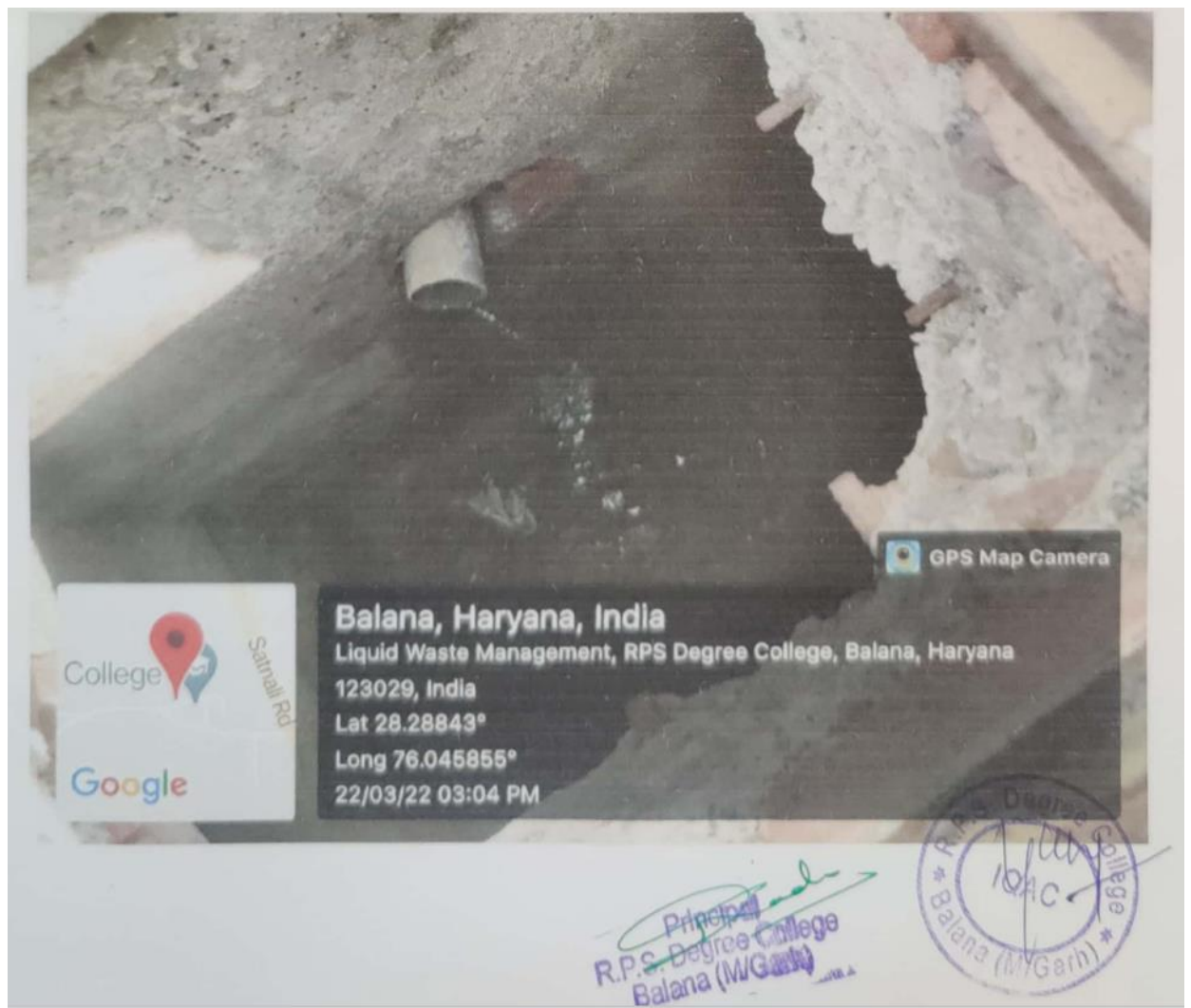
- There are Separate Garbage bins for biodegradable and non-degradable waste in different location of the campus including open areas, rooms, laboratories, mess and rest rooms. At the end, sweeper carries the collective garbage to dump into the garbage dump yard area.
- Reuse of one side printed Paper for internal communication.
- Wastes like newspapers and stationery is sold to proper recycling agencies/vendors.
- Single use plastic is banned inside the campus.





## LIQUID WASTE MANAGEMENT

The college follows the systematic procedure for proper management and disposal of liquid waste. Water pipelines coming out from rest rooms, drinking water areas and laboratories separately join through surface /underground pipelines and water gets disposed to underground tank and a sustainable liquid waste treatment is adopted by separating distilled liquid from the tank and further treatment is through bioremediation using microorganism metabolism which helps to minimize the chemical and biological load of sewage and is good for gardening purpose.





*[Handwritten Signature]*  
Principal  
R.P.S. Degree College  
Balana (M/Gan)

### **BIOMEDICAL WASTE MANAGEMENT**

There is no bio medical waste produced.

### **E-WASTE MANAGEMENT**

E-wastes are generated from computer laboratories, Physics Labs, Chemistry Lab, academic and Administrative Offices. The e-waste includes out of order equipment's or obsolete items like lab instruments, circuits, desktops, laptops and accessories, printer, charging and network cables, Wi-Fi devices, cartridges, sound systems, display units, UPS, Biometric Machine, scientific instruments etc. All these wastes are put to optimal use. Many times, student use e-waste parts for Project Base Learning. All such equipment's which cannot be reused or recycled is being disposed through authorized vendors.

### **HAZARDOUS CHEMICALS AND RADIOACTIVE WASTE MANAGEMENT**

The institution is free from any kind of hazardous waste. The chemicals in chemistry labs are handled carefully and Acid waste and Organic solvent wastes are being collected in separate container. They are neutralized, diluted and then discarded down the drain.

Radioactive substances are not used in the campus.

