



RAO PAHLAD SINGH DEGREE COLLEGE

(Approved by DGHE / Govt. of Haryana & Affiliated to Indra Gandhi University, Meerpur)

Satnali Road Balana, Mohindergarh Haryana-123029

Telephone: 01285-241432 Fax: 241431

E-mail: rpsbalana@gmail.com, Website: www.rpsdegreecollege.org

Report of Student Feedback on Syllabus and Curriculum

Objectives of Survey:

The Students Feedback on curriculum and syllabus was designed to get formative opinion from all the students regarding improvement in the quality of curriculum design and delivery.

Research Methodology:

There were 7 questions designed by the IQAC that were asked in the survey. These are as under:

1. How do you rate the syllabus of the courses that you have studied in relation to the competencies expected out of the course?
2. How do you rate the allocation of the credits to the courses?
3. Relevance for implementation in projects
4. How do you rate the electives offered in relation to the technological advancements?
5. How do you rate the evaluation scheme designed for each of the course?
6. How do you rate the percentage of courses having LAB components?
7. Curriculum is sufficient to make you analyze the engineering problems and its suitable solution

The data has been collected directly from the students through questionnaire that shared in the class room.

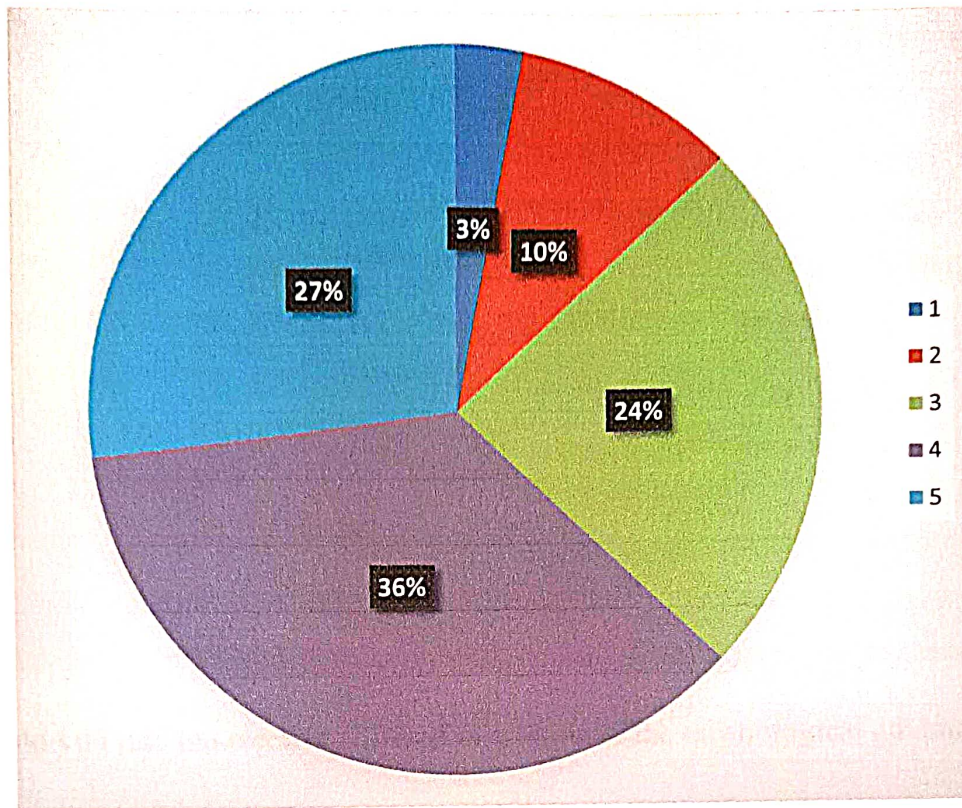
Analysis and Interpretation:

For the academic year 2021-2022, student's feedback is sought from around 121 students about the curriculum and syllabus. Their responses were fed to an excel sheet designed for the analysis by the IQAC team. The question-wise outcome of the results is presented below:

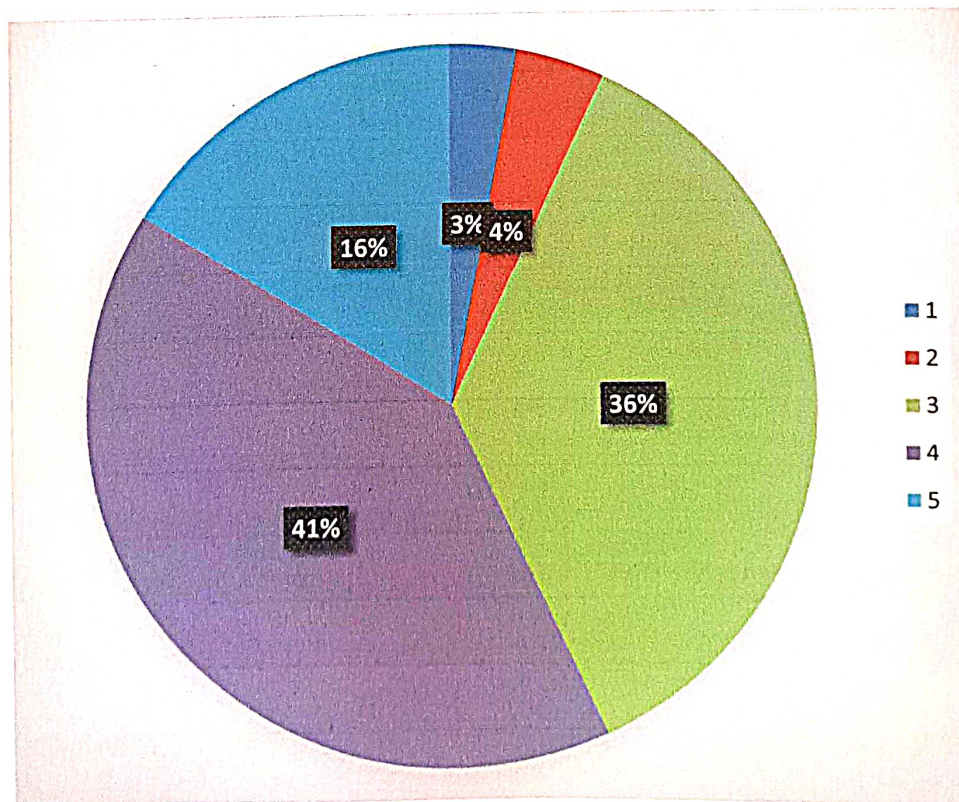


Student's Feedback on Syllabus & Curriculum

1. How do you rate the syllabus of the courses that you have studied in relation to the competencies expected out of the course

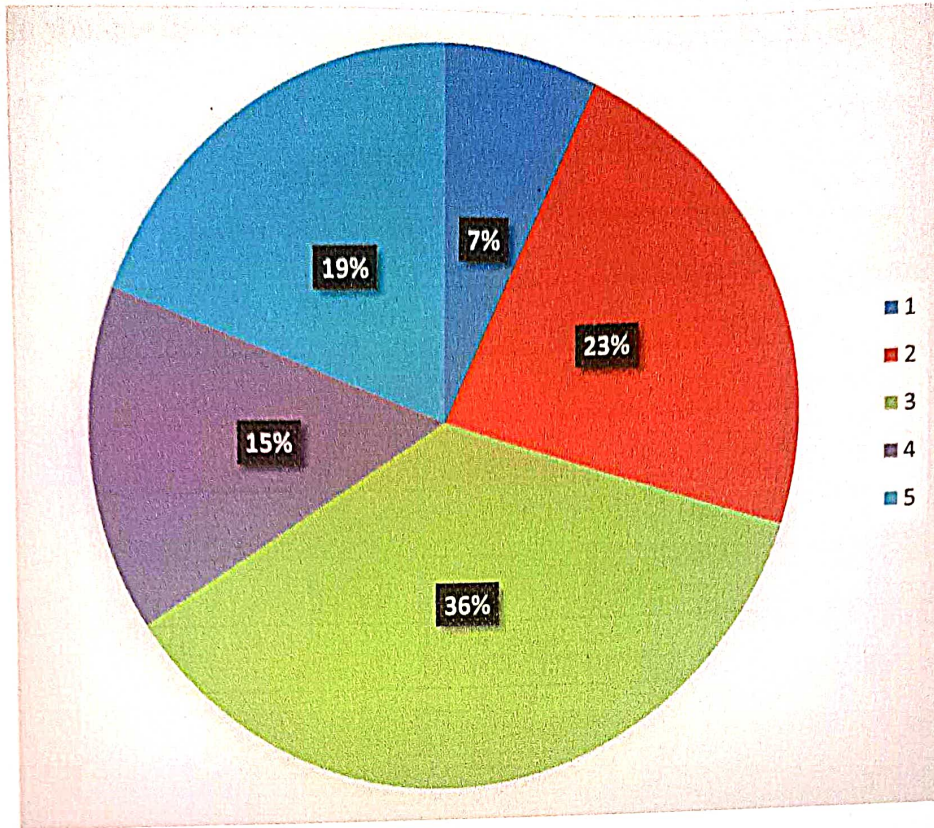


2. How do you rate the allocation of credits to the courses

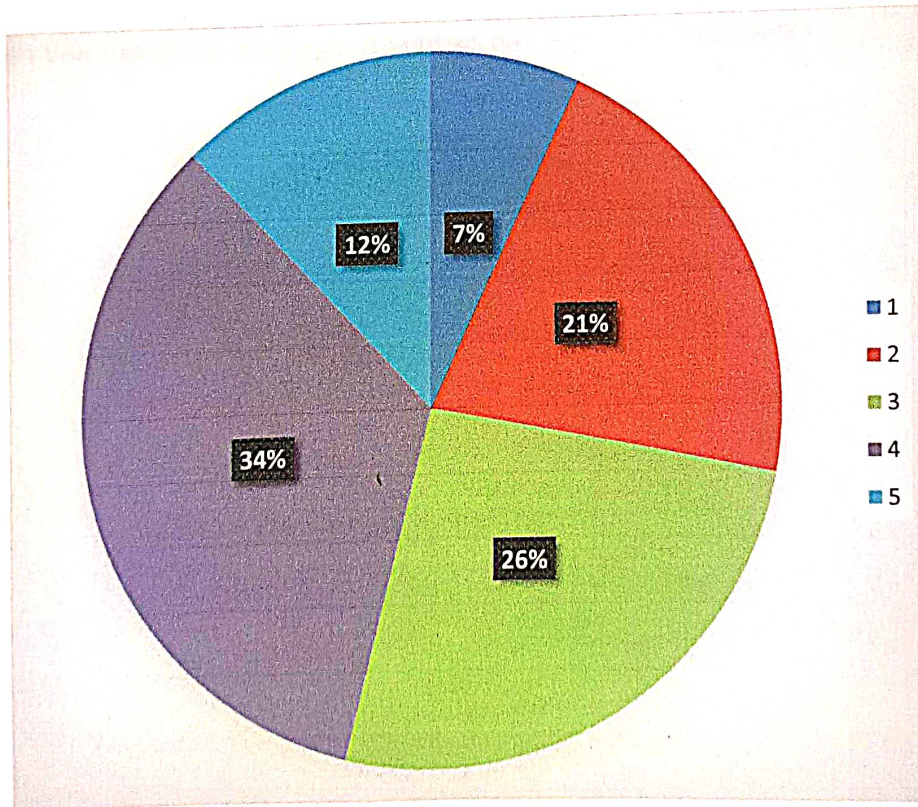


[Signature]
Principal
R.P.S. Degree College
Balana (M/Cam)

3. Relevance for implementation in projects

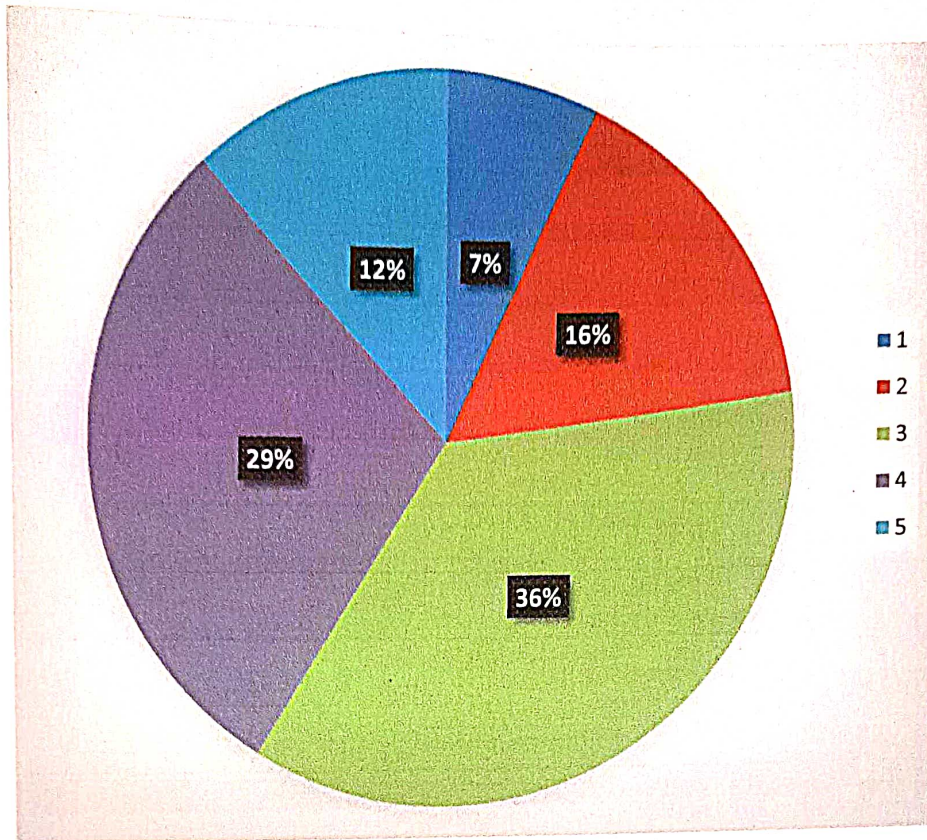


4. How do you rate the electives offered in relation to the technological advancements

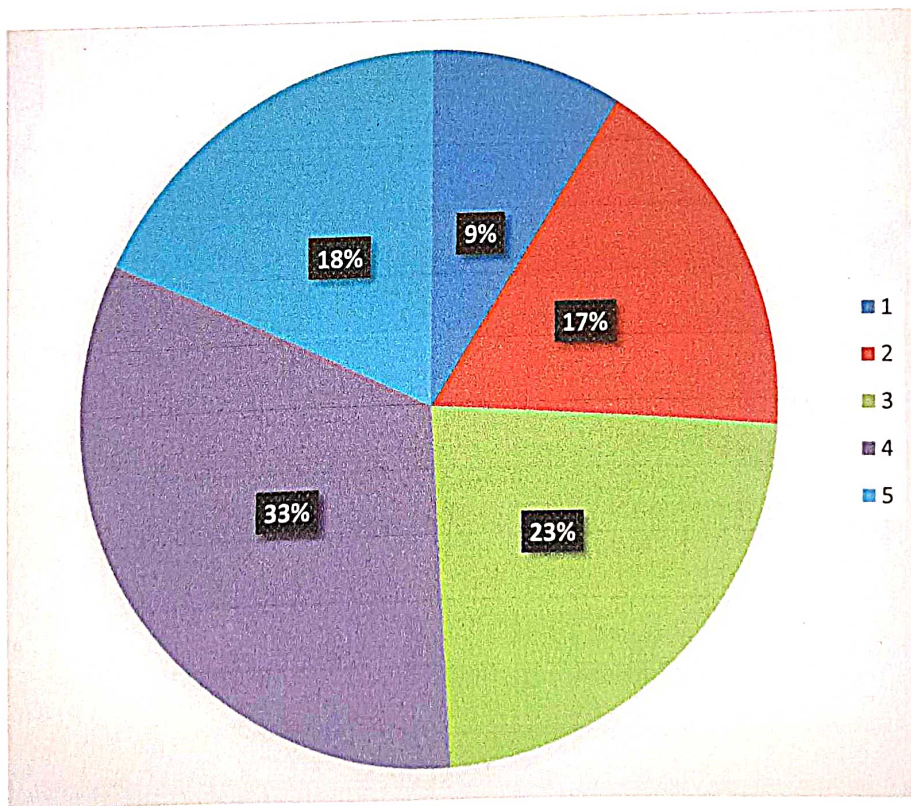


[Signature]
Principal
P.P.S. Degree College
Balana (A/C/2011)

5. How do you rate the evaluation scheme designed for each of the course

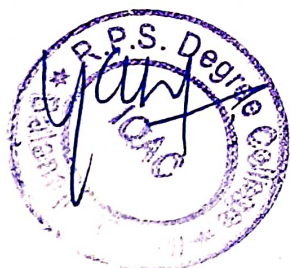
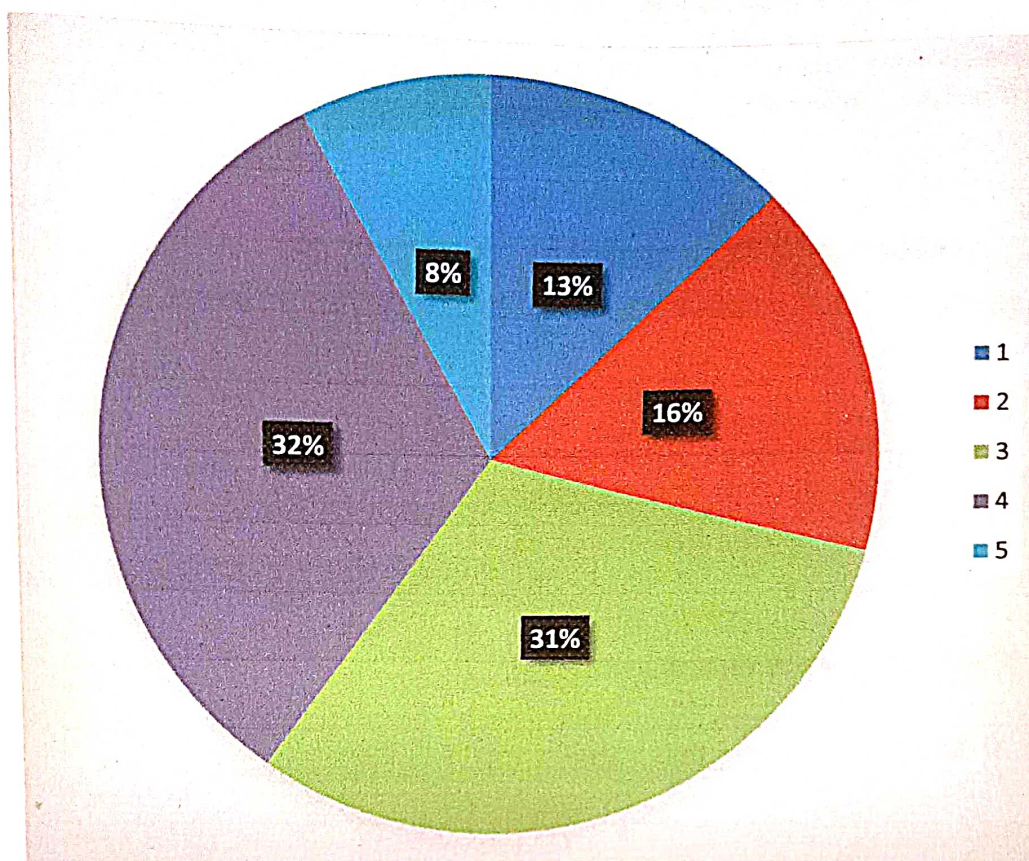


6. How do you rate the percentage of courses having I AB components



[Signature]
RPS Degree College
Balana (W/Gam)

7. Curriculum is sufficient to make you analyze the engineering problems and its suitable solution




Principal
RPS Degree College
Balana (M/Gadh)



RAO PAHLAD SINGH DEGREE COLLEGE

(Approved by DGHE / Govt. of Haryana & Affiliated to Indra Gandhi University, Meerpur)

Satnali Road Balana, Mohindergarh Haryana-123029

Telephone: 01285-241432 Fax: 241431

E-mail: rpsbalana@gmail.com, Website: www.rpsdegreecollege.org

Report of Faculty Feedback on Syllabus and Curriculum

Objectives of Survey:

The Faculty Feedback on curriculum was designed to get formative opinion from faculty regarding improvement in the quality of curriculum design and delivery.

Research Methodology:

There were 7 questions designed by the IQAC that were asked in the survey. These are as follows:


1. Do you feel that the curriculum is defined in a way to clarify your teaching goals and what you expect your student to learn?
2. Is the curriculum sufficient to bridge the gap between industry standards/ current global scenarios and academics?
3. Is the timely coverage of curriculum possible in the mentioned number of hours?
4. Sufficient reference material and books are available for the topic mentioned in the curriculum?
5. The evaluation methods mentioned in the curriculum are sufficient for providing proper assessment?
6. Curriculum is suitable to the course
7. The curriculum/course of this subject increased my knowledge and perspective in the subject area

The data has been collected directly from the teacher through questionnaire that shared in the staff room.

Analysis and Interpretation:

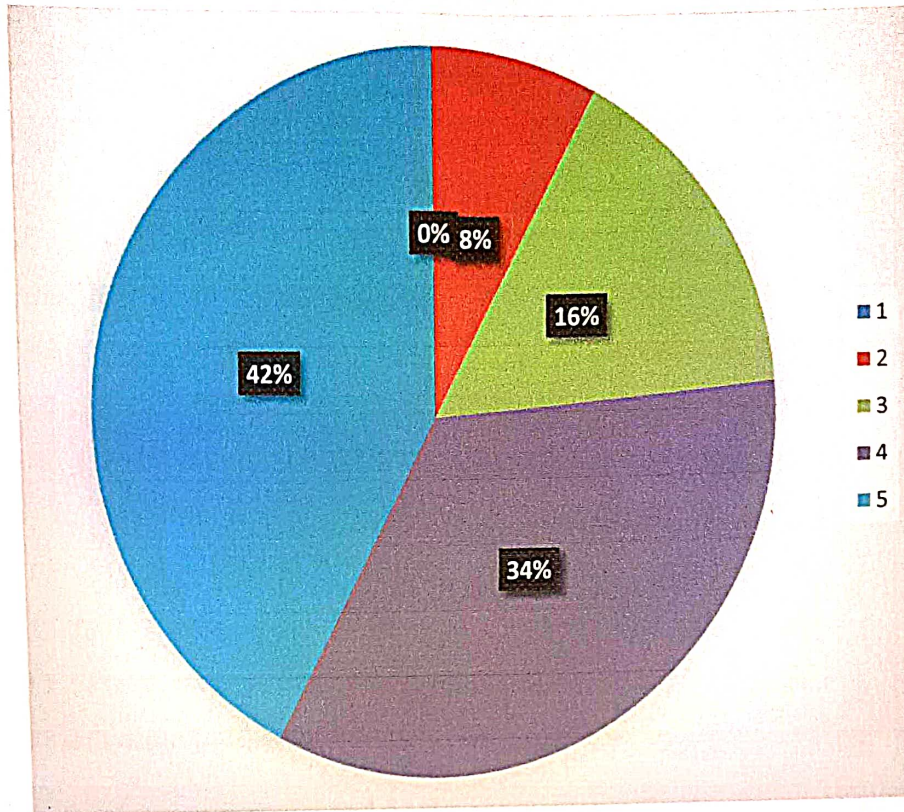
For the academic year 2021-2022, faculty feedback is sought from around 72 teachers about the curriculum and syllabus. Their responses were fed to an excel sheet designed for the analysis by the team. The responses were analyzed by a team of IQAC. The question-wise outcome of the results is presented below:



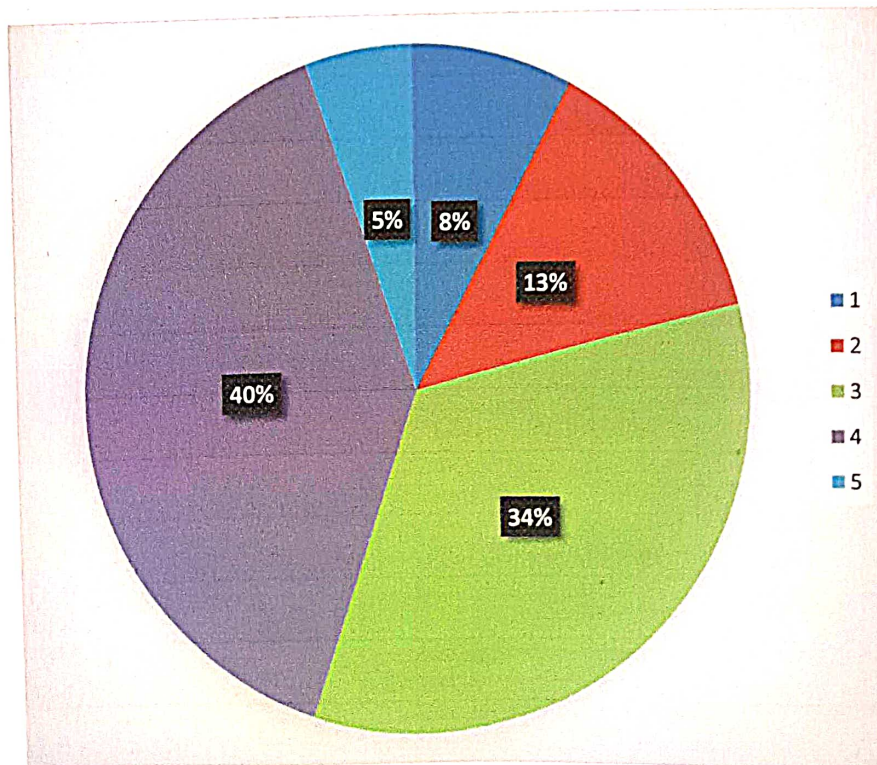

Principal
R.P.S. Degree College
Balana (M/Garh)

Teacher's Feedback on Syllabus & Curriculum

1. Do you feel that the curriculum is defined in a way to clarify your teaching goals and what you expect your student to learn

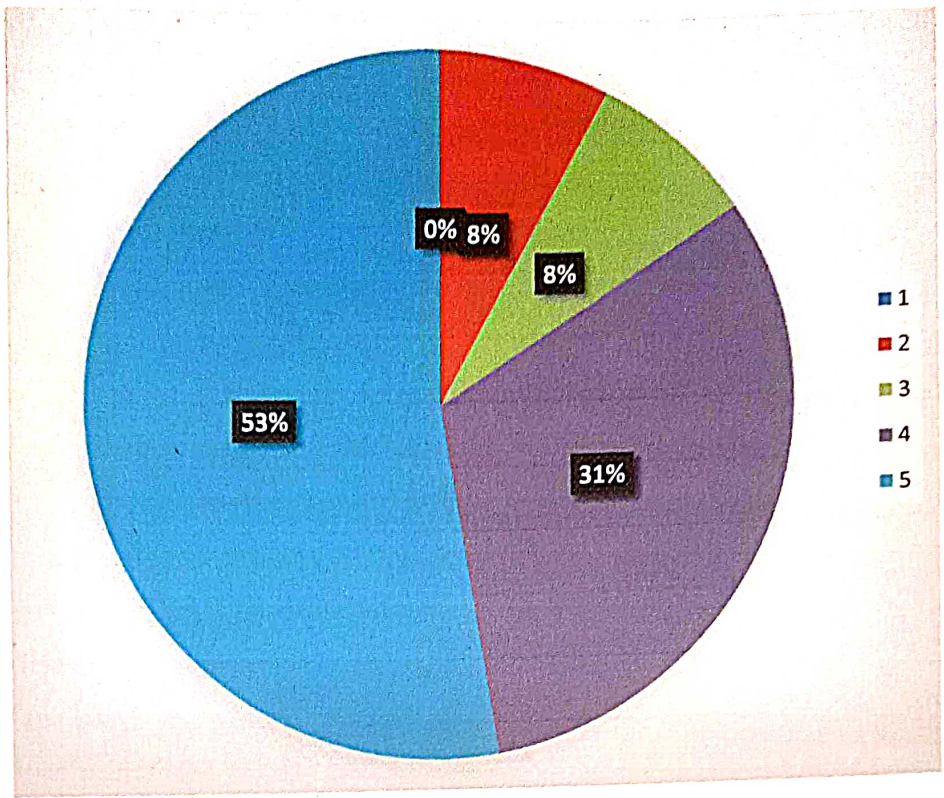


2. Is the curriculum sufficient to bridge the gap between industry standards/ current global scenarios and academics

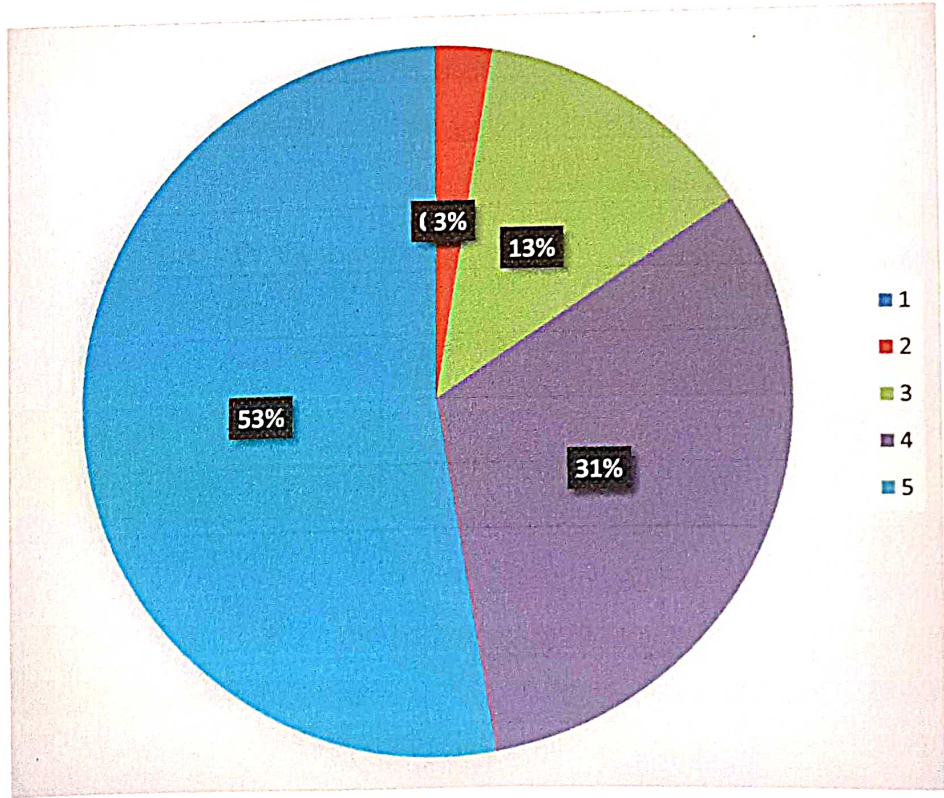


Principal
RPS Degree College
Balana (A.R.Gam)

3. Is the timely coverage of curriculum possible in the mentioned number of hours

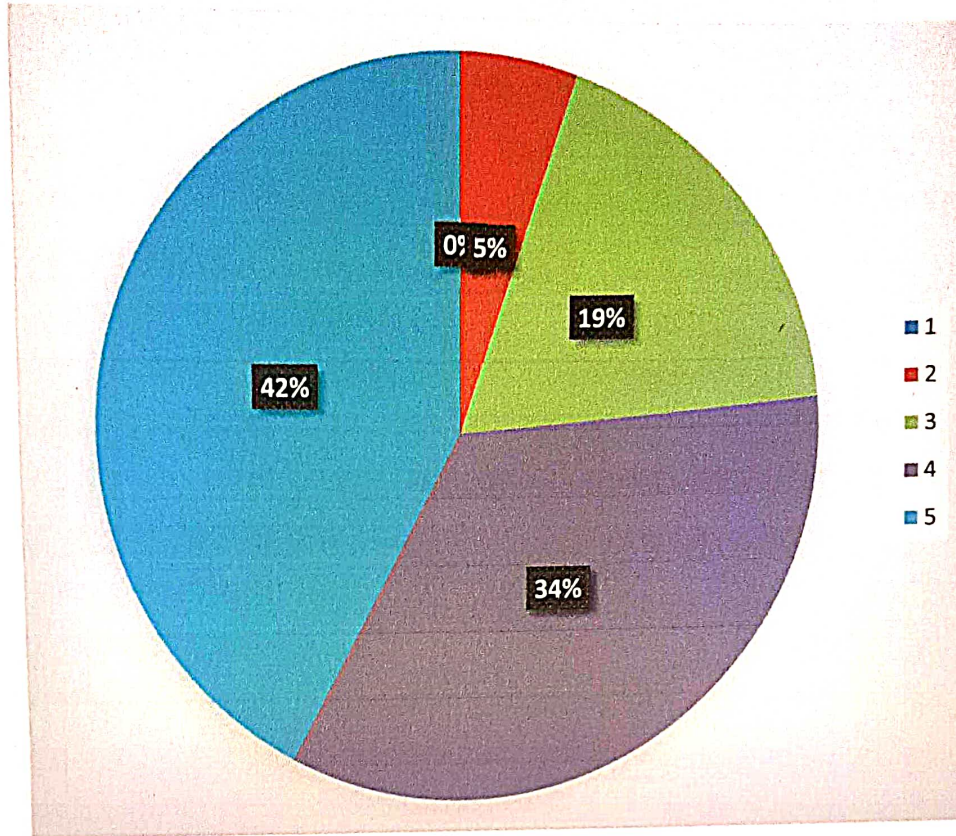


4. Sufficient reference material and books are available for the the topic mentioned in the curriculum

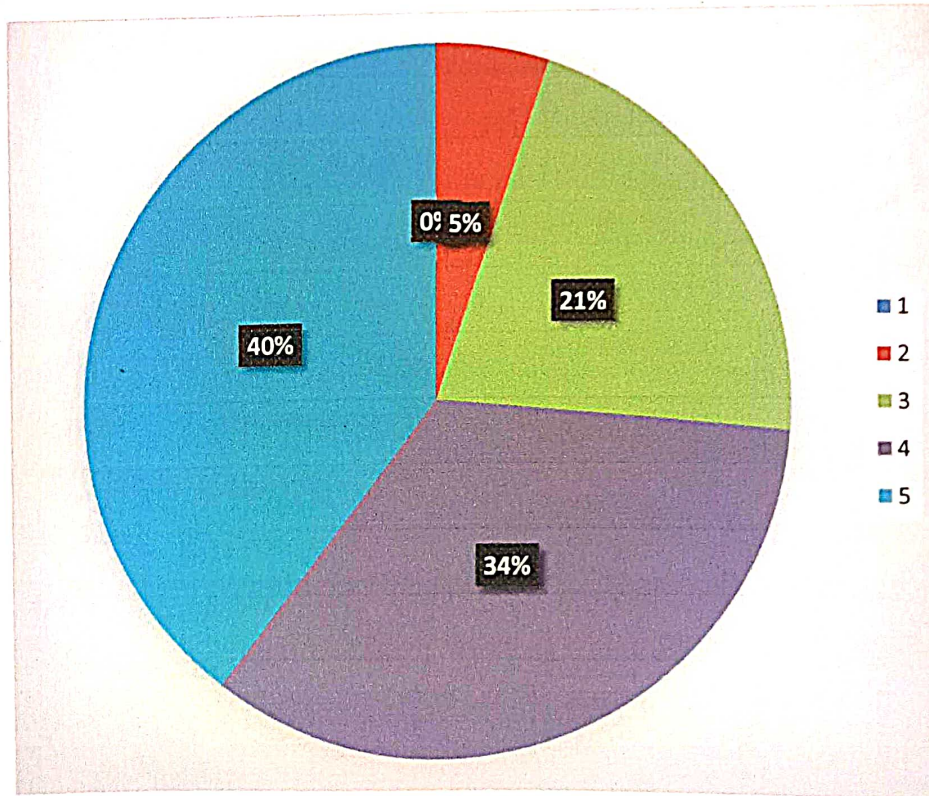


[Handwritten Signature]
Principal
RPS Degree College
Balana (Alibam)

5. The evaluation methods mentioned in the curriculum are sufficient for providing proper assessment

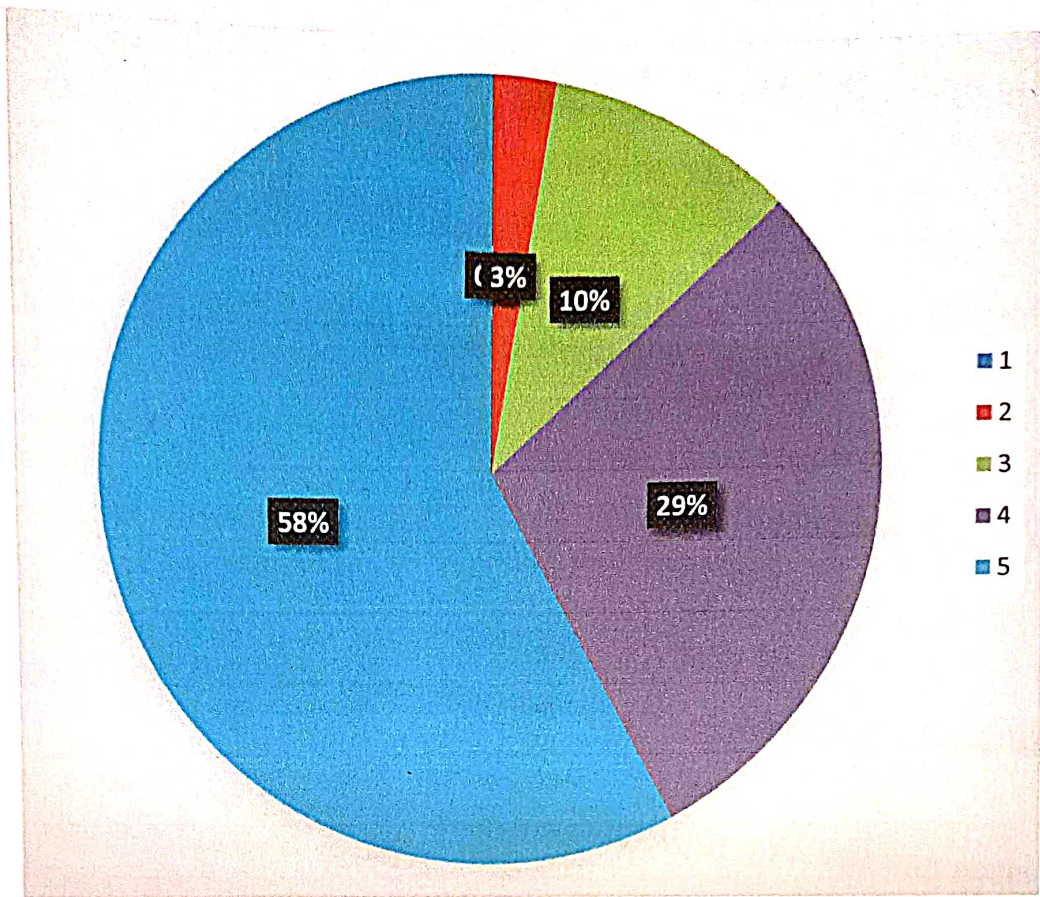


6. Curriculum is suitable to the course



Principal
R.P.S. Degree College
Balana (M/Gam)

7. The curriculum/course of this subject increased my knowledge and perspective in the subject area




Principal
RPS Degree College
Balana (M/Gam)



RAO PAHLAD SINGH DEGREE COLLEGE

(Approved by DGHE / Govt. of Haryana & Affiliated to Indira Gandhi University, Meerpur)

Satnali Road Balana, Mohindergarh Haryana-123029

Telephone: 01285-241432 Fax: 241431

E-mail: rpsbalana@gmail.com, Website: www.rpsdegreecollege.org

Report of Alumni Feedback on Syllabus and Curriculum

Objectives of Survey:

The Alumni Feedback on curriculum is designed to get formative opinion from alumni regarding improvement in the quality of curriculum design and delivery.

Research Methodology:

There were 7 questions designed by the IQAC that were asked in the survey. These are as follows:

1. When you compare yourself with other counterparts from other Institution, you feel that you got most of all the facilities which is not available in other Institution.
2. Learning value (in terms of skills, concepts, knowledge, analytical abilities or broadening perspectives).
3. Curriculum is sufficient to make you analyze the engineering problems and its suitable solution.
4. How do you rate the learning experience in term of their relevance to the real life application?
5. Ability to work in teams.
6. Ability to link theory to practice.
7. How do you rate the course/curriculum content that you have learnt in relation to your current job?
8. Compatibility with industry standards.

The data has been collected directly from the alumni through questionnaire that shared when she/he come to college for collecting marks sheet.

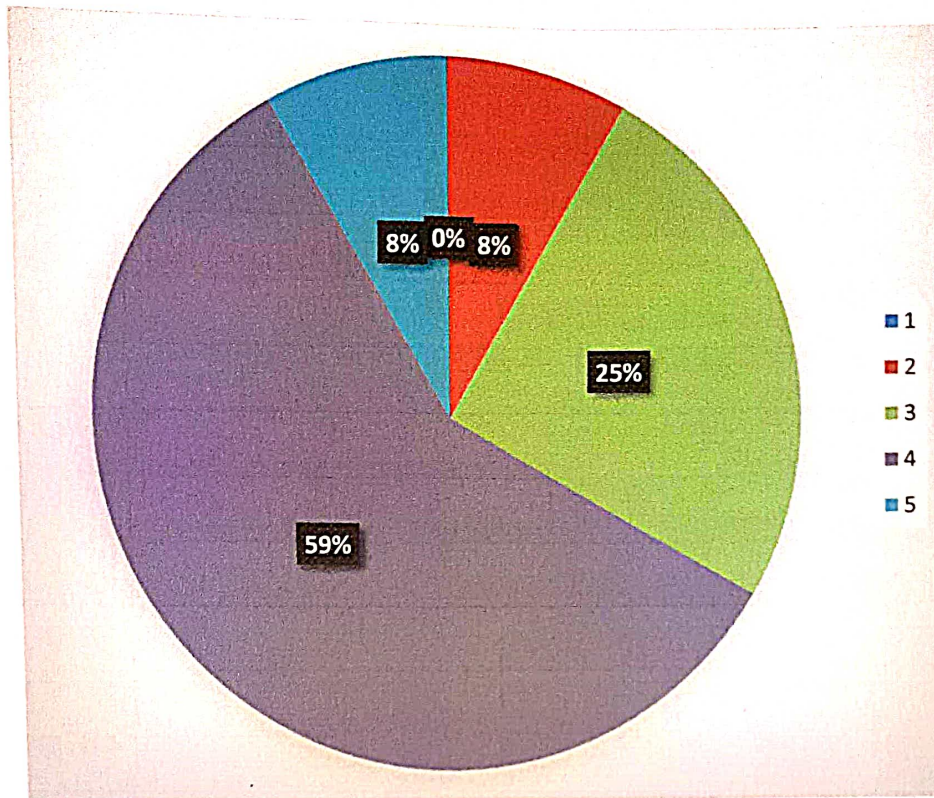
Analysis and Interpretation:

For the academic year 2021-2022, Alumni feedback is sought from around 46 students about the curriculum and syllabus. Their responses were fed to an excel sheet designed for the analysis by the team. The responses were analyzed by a team of IQAC. The question-wise outcome of the results is presented below:

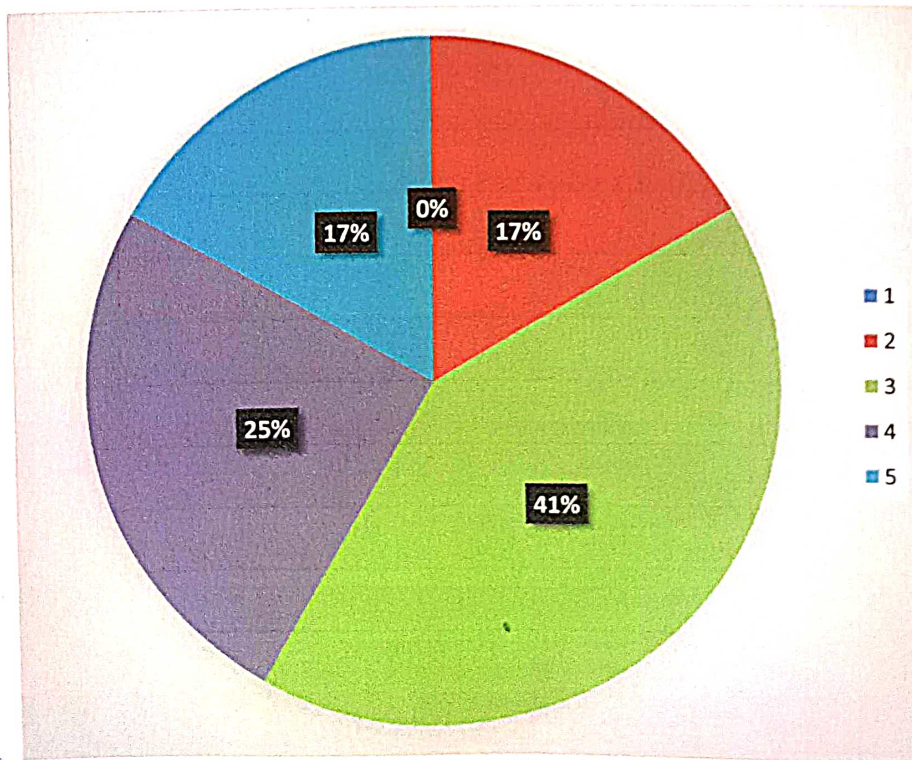


Alumni Feedback on Syllabus & Curriculum

1. When you compare yourself with other counterparts from other Institutions, you feel that you got most of all the facilities which is not available in other Institutions

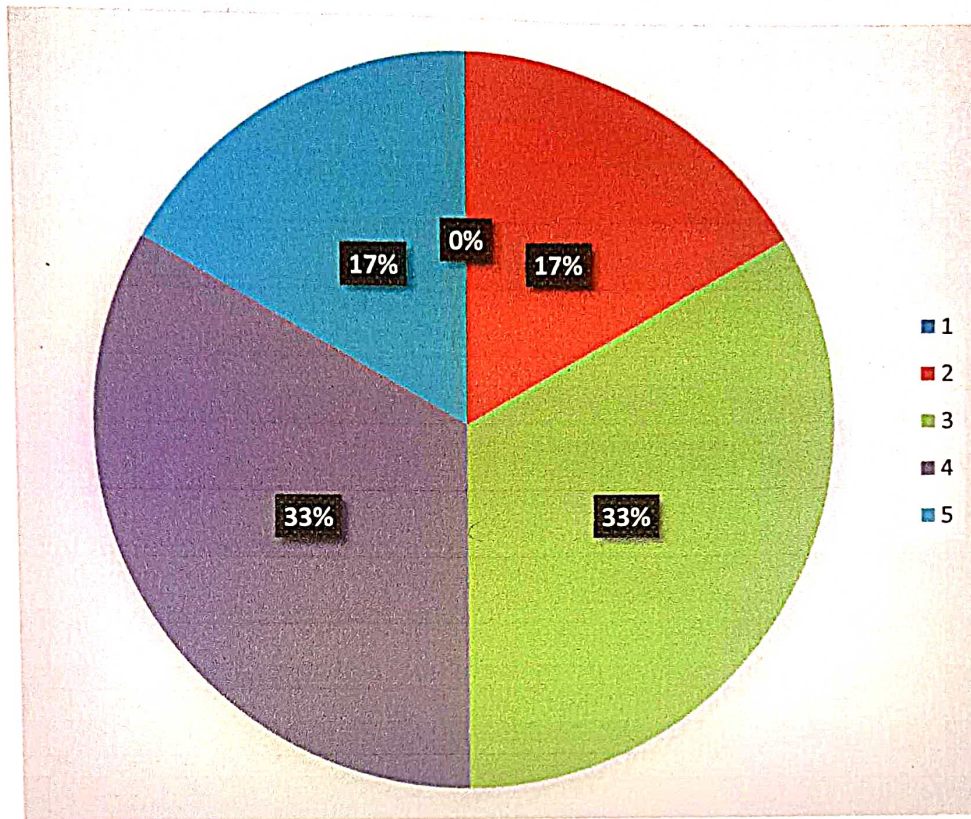


2. Learningvalue (in terms of skills, concepts, knowledge, analytical abilities or broadening perspectives)

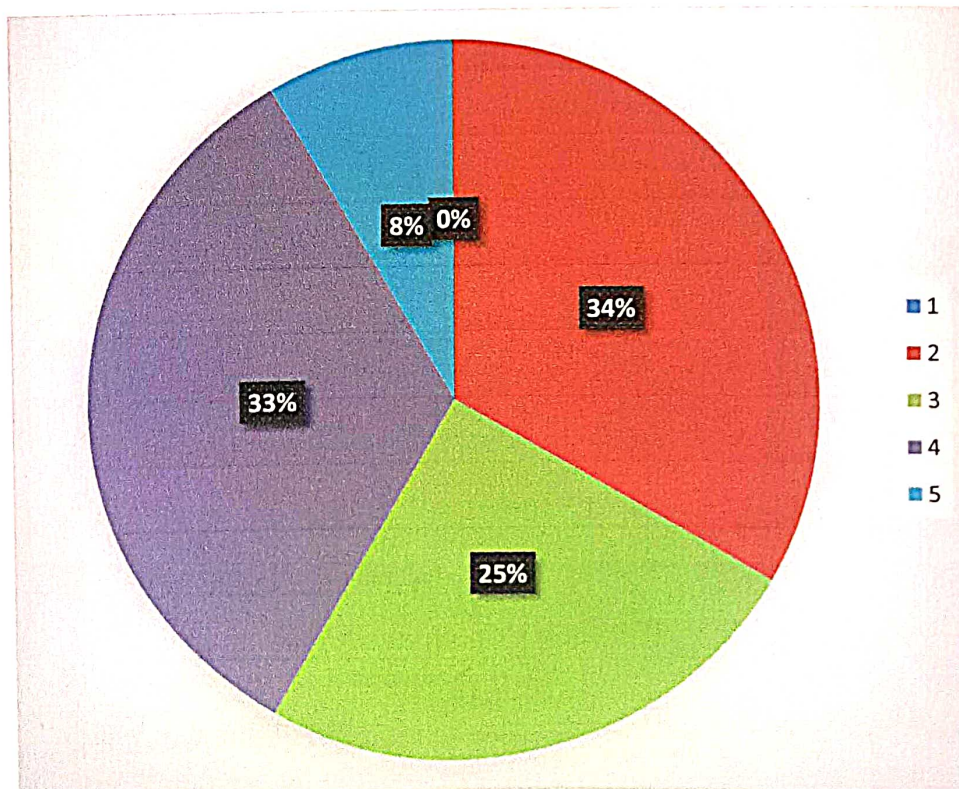


[Signature]
R.P.S. Degree College
Mysuru (M/Gam)

3. Curriculum is sufficient to make you analyze the engineering problems and its suitable solution

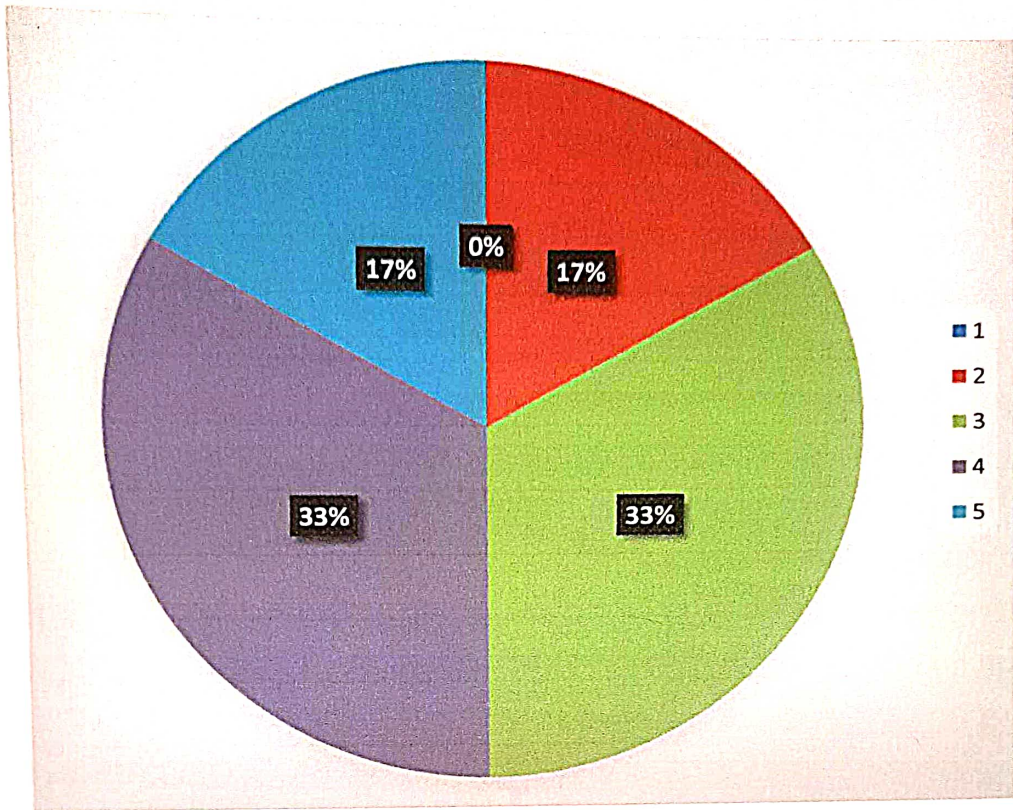


4. How do you rate the learning experience in term of their relevance to the real life application

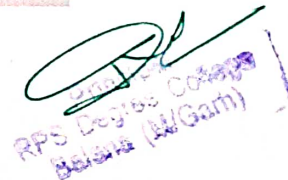
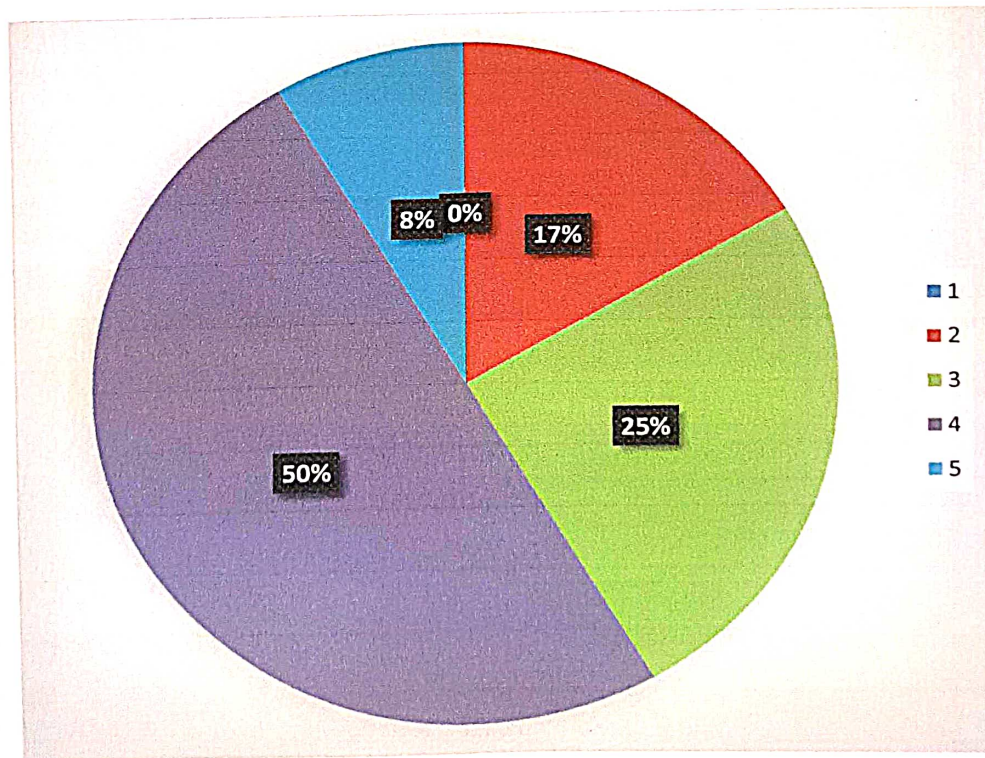


Principal
RPS Degree College
Belana (Al/Gam)

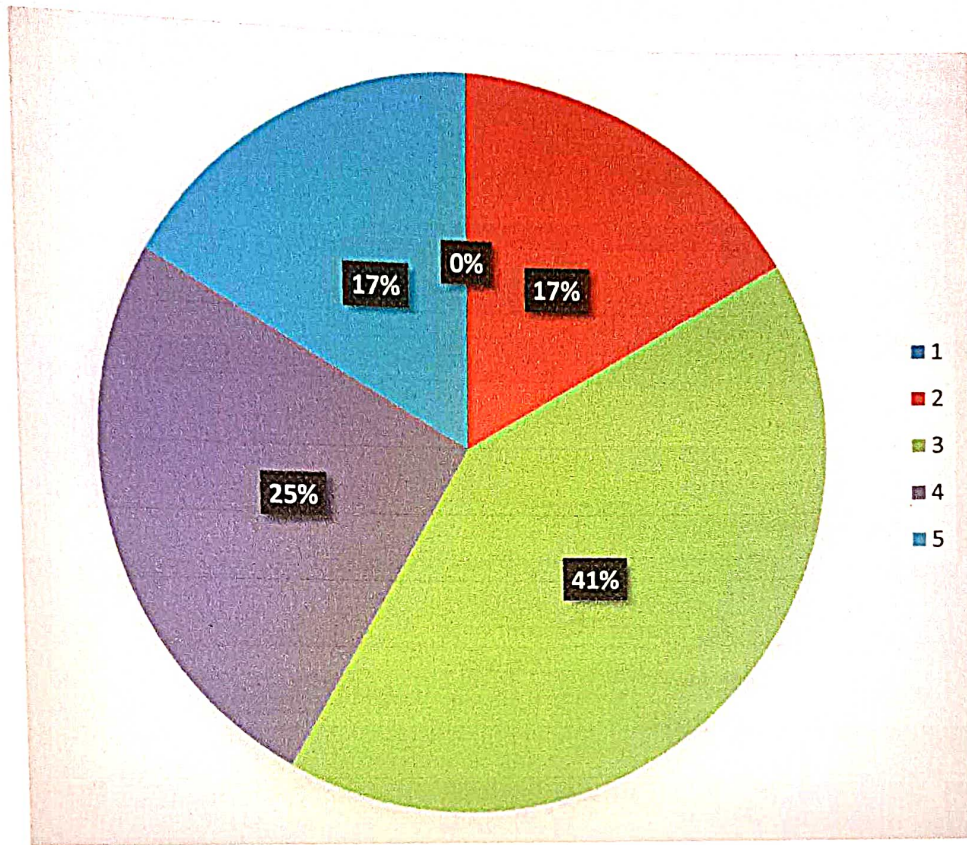
5. Ability to work in terms



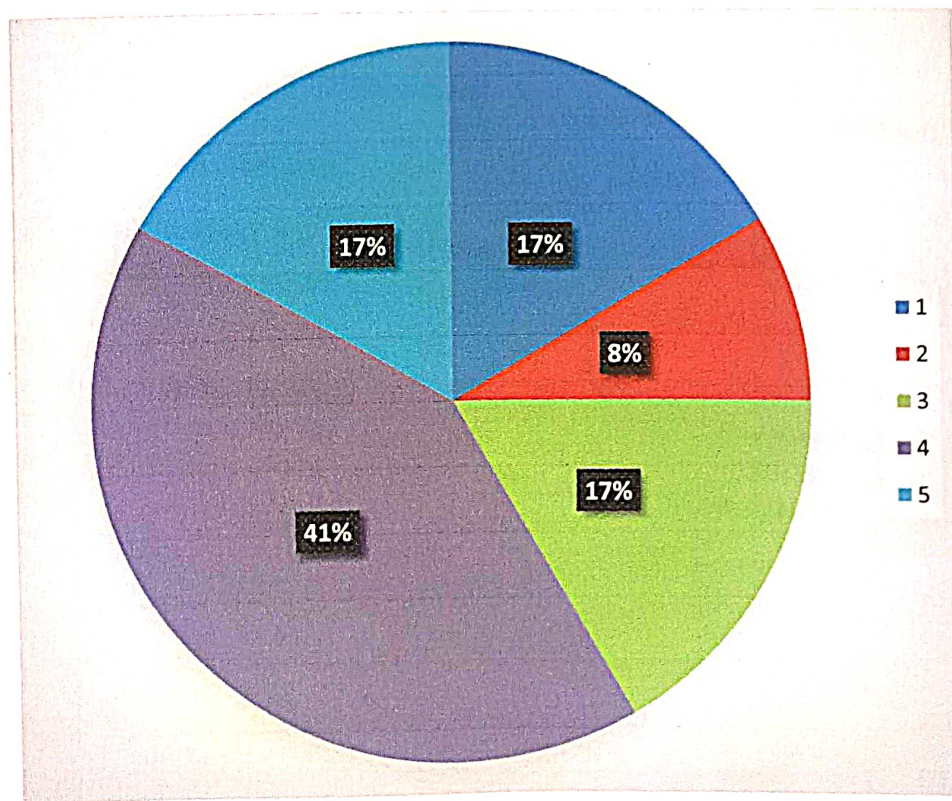
6. Ability to link theory to practice



7. How do you rate the course/curriculum content that you have learnt in relation to your current job



8. Compatibility with Industry standards



PPS Degree College
Bahara (M/Gam)



RAO PAHLAD SINGH DEGREE COLLEGE

(Approved by DGHE / Govt. of Haryana & Affiliated to Indira Gandhi University, Meerpur)

Satnali Road Balana, Mohindergarh Haryana-123029

Telephone: 01285-241432 Fax: 241431

E-mail: rpsbalana@gmail.com, Website: www.rpsdegrecollege.org

Report of Employer Feedback on Syllabus and Curriculum

Objectives of Survey:

The Employer Feedback on curriculum is designed to get formative opinion from employers regarding improvement in the quality of curriculum design and delivery.

Research Methodology:

There were 7 questions designed by the IQAC that were asked in the survey. These are as follows:

1. Do you feel that the curriculum is defined in a way to clarify teaching goals and what you expect student to learn?
2. Is the curriculum sufficient to bridge the gap between industry standards/ current global scenarios and academics?
3. Is the timely coverage of curriculum possible in the mentioned number of hours?
4. The syllabus has good balance between theory and applications.
5. How do you rate the competencies/outcomes in relation to the course content?
6. Is curriculum relevant for employability?
7. Is curriculum effective in developing innovative thinking, personality, person's intellectual?

The data has been collected directly from the employer through questionnaire.

Analysis and Interpretation:

For the academic year 2021-2022, employer feedback is sought from members of governing body. Their responses were fed to an excel sheet designed for the analysis by the team. The responses were analyzed by a team of IQAC. The question-wise outcome of the results is presented below:


IQAC Coordinator


Principal
R.P.S. Degree College
Balana (M/Garh)